

## myProbes Custom FISH Probes



- Target your gene of choice with custom probes designed to meet your specific requirements
- Improve confidence in result interpretation with high intensity signals and minimal background
- Enhance detection and scoring accuracy with robust, easy-to-analyse probes
- Save time and minimise mixing errors with easy-to-use, pre-mixed probes

# Have you tried our Custom FISH Probes?

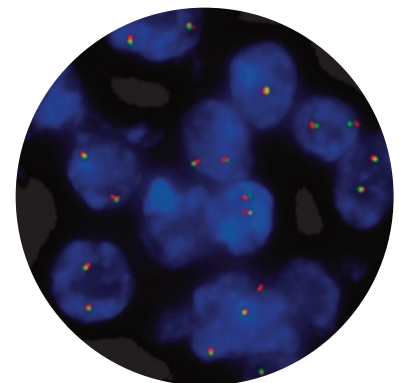
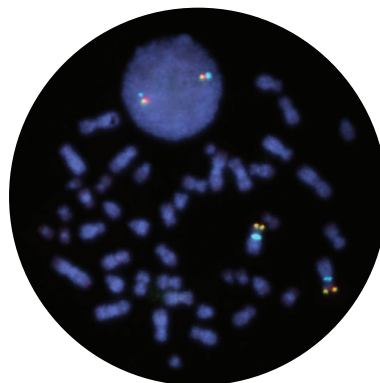
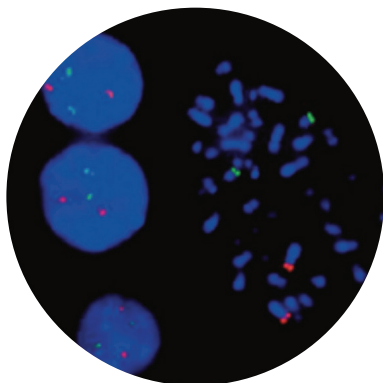
If you are looking for a unique product, our myProbes® Custom FISH Probes service can design and produce a new custom probe based on your specific requirements. This can range from a simple modification of an existing probe to a completely new project.

## Popular hematology myProbes

|        |        |             |       |            |        |
|--------|--------|-------------|-------|------------|--------|
| ABL1   | ABL2   | API2(BIRC3) | CCND2 | CHIC2      | CSF1R  |
| EPOR   | FIP1L1 | FLT3        | GLIS2 | JAK2       | MECOM  |
| MLLT10 | MYST3  | NTRK3       | PAX5  | PCM1       | PDGFRA |
| PICALM | RELN   | RPN1        | SEC63 | TCRG (TRG) | ZNF384 |

## Popular pathology myProbes

|        |        |       |       |       |          |
|--------|--------|-------|-------|-------|----------|
| ATF1   | BRAF   | CD274 | CDK4  | CIC   | CTNNB1   |
| DNMT3A | DUSP22 | HEY1  | IRF4  | MAML2 | MUC16    |
| NCOA2  | NTRK1  | NTRK2 | NTRK3 | NUTM1 | PDCD1LG2 |
| PKIA   | PLAG1  | PTEN  | RELA  | USP6  | VHL      |



# Over 2000 myProbes developed since 2010

## Expert consultation from start to finish

Getting started on a new custom myProbes project couldn't be easier:

|        |   |
|--------|---|
| Step 1 | Select the gene/target of interest  |
| Step 2 | Specify the sample type(s)  |
| Step 3 | Specify the probe strategy required (amplification, breakapart, deletion, dual fusion, other) |
| Step 4 | Choose the colour (up to 5 colours)<br>Probe colours:<br>Red, Green, Aqua, Orange, Gold       |
| Step 5 | myProbes team gets to work designing your custom probe!                                       |

### Produced to the highest standards

Our custom myProbes FISH probes are manufactured under the same ISO 9001:2015 and ISO 13485:2016 certified Quality Management System as our standard catalog FISH probes.

This means that from the moment you place your trust in OGT to develop a new custom probe, you can be confident that our expert team will design and deliver a probe you can depend on.

### Don't just take our word for it...

**“We have completed evaluation and validation on a number of probes designed by the myProbes team and love the performance. The myProbes team has done an excellent job and filled a very specific need.”**

Professor Mark Pettenati, Director, Cytogenetics and Molecular Cytogenetics,  
Wake Forest University Medical Center, North Carolina.

# CytoCell myProbes

## General inquiries

US +1 914 467 5285  
contact@ogt.com

## Ordering information

US +1 833 208 4648  
OGTorders@systemex.com  
ogt.com

Get in touch with us to discover more about our custom FISH probe offering and to view our list of existing myProbes—over 2000 probes are available to order.



A Sysmex Group Company

**What binds us,  
makes us.**

Oxford Gene Technology Inc., 520 White Plains Road, Suite 500, Tarrytown, NY 10591, USA

**CytoCell:** CytoCell®: Analyte Specific Reagent, analytical and performance characteristics are not established. CytoCell: Some products may not be available in your region. myProbes® (USA): Analyte Specific Reagent, analytical and performance characteristics are not established. myProbes® (Canada): For Research Use Only; Not for Use in Diagnostic Procedures. This document and its contents are © Oxford Gene Technology IP Limited – 2021. All rights reserved. OGT™, CytoSure® and SureSeq™ are trademarks of Oxford Gene Technology IP Limited. CytoCell® and myProbes® are registered trademarks of CytoCell Ltd.

