

myProbes Passport (RUO Probes)

MPA56030

9/14/17 Ploidy Probe
For Research Use Only

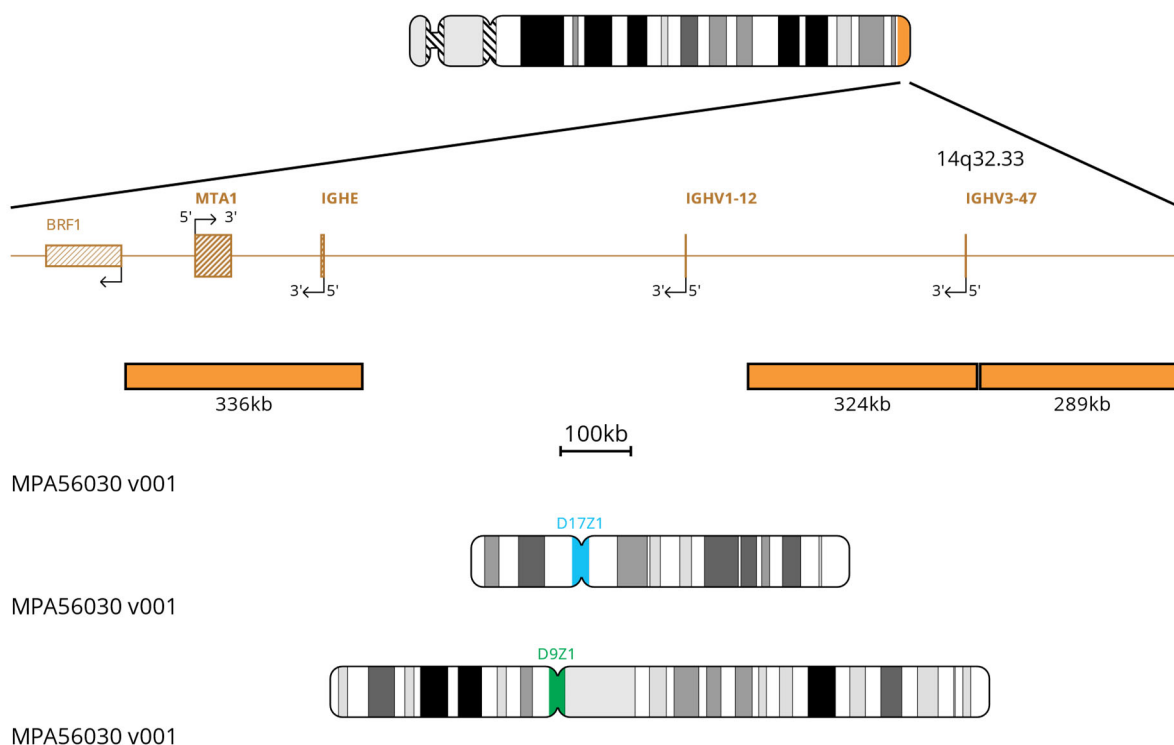
Nucleotide Locations (If requesting more than one probe please specify individual probe colours)

	Chromosome Locus	Start	End	Colour
1	14q32.33	107258048	107284028	ORANGE
2	14q32.33	107159169	107268435	ORANGE
3	14q32.33	107077121	107174332	ORANGE
4	14q32.33	106995077	107135809	ORANGE
5	14q32.33	106841143	106991527	ORANGE
6	14q32.33	106782750	106874173	ORANGE
7	14q32.33	105947801	106124038	ORANGE
8	14q32.33	106667209	106820849	ORANGE
9	14q32.33	105787920	105999428	ORANGE
10	17cen	17p11.1	17q11.1	AQUA
11	9cen	9p11.1	9q11.1	GREEN

Database Used and Version

GRCh37(hg19)

Probe Map



Materials Provided

- Probe:** 100µl per vial
The probe is provided pre-mixed in hybridisation solution (Formamide; Dextran Sulphate; SSC) and is ready to use. It is directly labelled with an orange fluorophore, which lies in the Orange Spectrum, with an aqua fluorophore, which lies in the Aqua Spectrum and with a green fluorophore, which lies in FITC Spectrum. The probe has been batch released after QC testing on Peripheral Blood Sample.
- Counterstain:** 150 µl per vial. The counterstain is DAPI antifade (ES: 0.125µg/ml DAPI (4,6-diamidino-2-phenylindole)).

Warnings and Precautions

- For research use only. Not for use in diagnostic procedures.
- For laboratory professional use only.
- Probe mixtures contain formamide, which is a teratogen; do not breathe fumes or allow skin contact. Handle with care; wear gloves and a lab coat.
- DAPI is a potential carcinogen. Handle with care; wear gloves and a lab coat.
- Follow local disposal regulations for your location along with recommendations in the Safety Data Sheet to determine the safe disposal of this product. This also applies to damaged test kit contents.
- Dispose of all used reagents and any other contaminated disposable materials following procedures for infectious or potentially infectious waste. It is the responsibility of each laboratory to handle solid and liquid waste according to their nature and degree of hazardousness and to treat and dispose of them (or have them treated and disposed of) in accordance with any applicable regulations.

7. Operators must be capable of distinguishing the colours red, blue, and green.
8. The probe should not be diluted or mixed with other probes.
9. All products should be validated before use.
10. Internal controls should be carried out by using unaffected cell populations in testing samples.
11. Custom probes are specifically developed for individual customers' RESEARCH USE ONLY (RUO) requirements and not with the intention of being used for in vitro diagnostic examination. Therefore, prior to any use of these probes, users should review the design of such probes to confirm they are suitable for their requirements.

Storage and Handling

1. Store the probe between -25°C to -15°C.
2. Based on the stability established for other substantially equivalent CytoCell probes, this myProbes product should be stable for 2 years post manufacture date when stored as indicated on the label.
3. Store the probe and counterstain vials in the dark. Ensure that exposure of the probe and counterstain to laboratory lights is limited at all times.

Known Cross-Reactivity

Known cross hybridisation from orange is expected on chromosome locus 15q11.2 and 16p11.2.
Known cross hybridisation from aqua is expected on chromosome locus 1c,11c and Xc.

Customer Support

Please contact the CytoCell Technical Support Department or email probes@cytoCELL.com.

Patents and Trademarks

myProbes and CytoCell are registered trademarks of CytoCell Ltd.

For Research Use Only. Not for use in diagnostic procedures.

This product contains technology licensed from Life Technologies Corporation that is available for human diagnostics or life science research use only.

CytoCell Ltd.

Oxford Gene Technology
418 Cambridge Science Park,
Milton Road,
Cambridge, CB4 0PZ, UK
T: +44(0)1223 294048
F: +44(0)1223 294986
E: probes@cytoCELL.com
W: www.ogt.com

